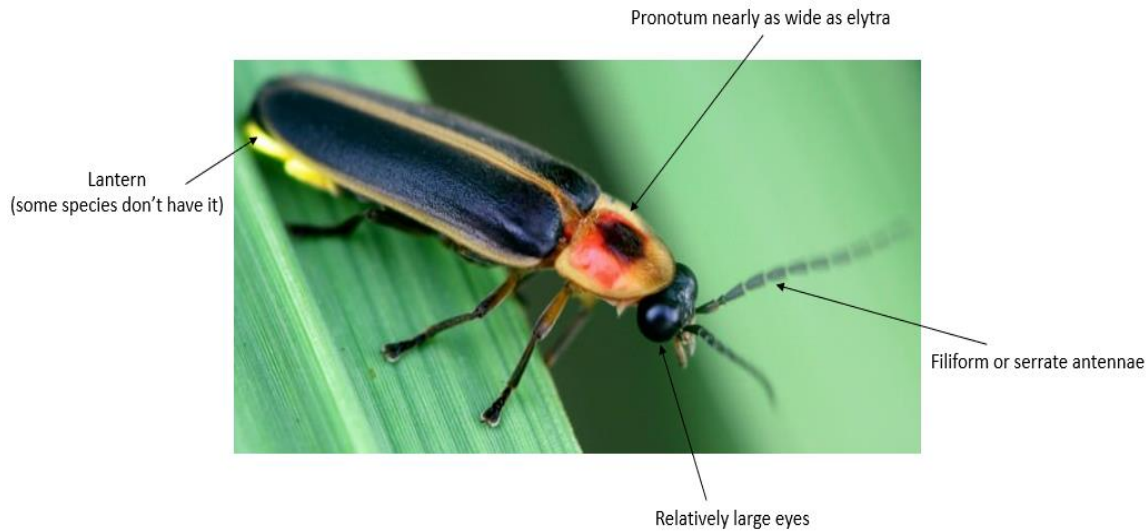


# Firefly ID



---

## Submission Form

---

1) When was the firefly (fireflies) collected?

Date:

Time of day:

---

2) Location of firefly (fireflies)?

City:

County:

State: MO

Street address or GPS coordinates, if possible (longitude/latitude) \*:

*\* If you own a smartphone, you can attain longitude/latitude by opening the Google Maps app, touch the area you are located until you see a red pin appear, the coordinates will appear either in the search box at the top or below under marked location*

---

3) Where were the firefly (fireflies) collected? (e.g., flying above grassland, on grass leaf, etc.)

---

4) Any notes of flash pattern? (e.g., number of flashes, length of pauses, etc.)

---

## Submission Instructions

1. Place the firefly (fireflies) inside a hard plastic container (*for example pill bottles with identifying info removed, small plastic travel jars, etc.*).

If specimens are captured on different dates and/or at different locations, use separate containers. Multiple containers can be shipped at one time.

2. Place the hard plastic container in a plastic zip top bag with the completed sample submission form into an envelope/box and mail. Each container should have its own form.

3. Freeze the fireflies and keep frozen until preparing to mail. Fireflies should be placed in the freezer while alive.

4. Download, print, and fill out a submission form and address a padded envelope (or a bubble mailer) to:

Yuanwu Wang, Graduate student  
Department of Biological & Clinical Sciences  
WC Morris 306  
University of Central Missouri  
Warrensburg, MO 64093

**How to mail insects:**

<https://kentuckypestnews.wordpress.com/2022/05/24/so-you-want-to-mail-a-bug/#:~:text=Simply%20freezing%20the%20insect%20before,crushed%20by%20mail%20sorting%20machines.>